

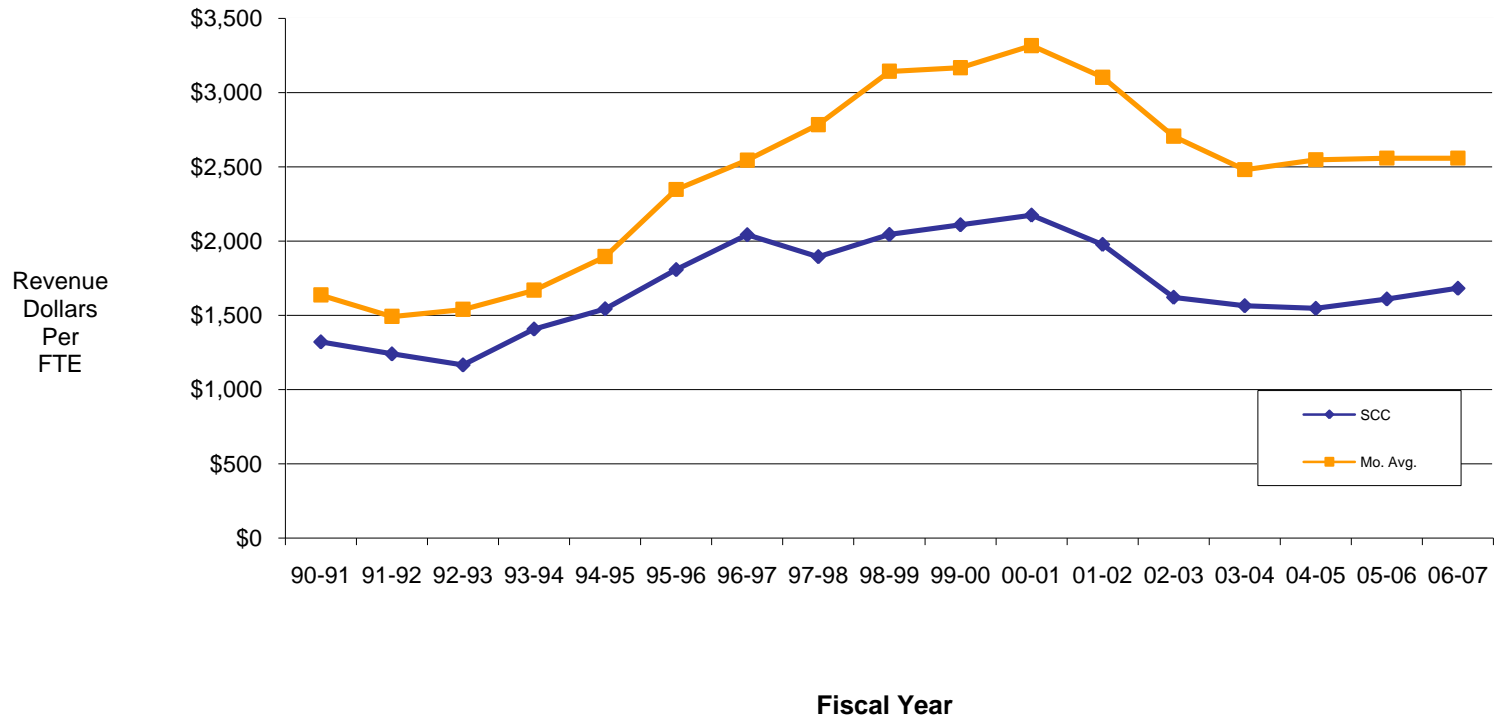
**Table 19: A Comparison Of Annual State Revenue Dollars Per FTE Between SCC And All Missouri Community College Districts From FY91 to FY07**

(C32)

	Fiscal Years																
	90-91	91-92	92-93	93-94	94-95	95-96	96-97	97-98	98-99	99-00	00-01	01-02	02-03	03-04	04-05	05-06	06-07
SCC	\$1,322	\$1,241	\$1,166	\$1,408	\$1,544	\$1,809	\$2,043	\$1,896	\$2,045	\$2,110	\$2,175	\$1,978	\$1,622	\$1,565	\$1,548	\$1,611	\$1,683
MO AVG.	\$1,637	\$1,492	\$1,540	\$1,669	\$1,895	\$2,347	\$2,544	\$2,784	\$3,143	\$3,168	\$3,316	\$3,102	\$2,705	\$2,480	\$2,547	\$2,559	\$2,594

Source: CBHE Statistical Summary Tables, www.dhe.gov/statsum.shmtl.

**Graph 19.1: A Comparison Of Annual State Revenue Dollars Per FTE Between SCC And All Missouri Community College Districts From FY91 to FY07**



Graph 19.1 compares the trends in Missouri State Aid expenditures per FTE ratio for all Missouri Community colleges and SCC. This analysis shows that: (1) SCC has always lagged behind the Missouri community college average on this indicator and (2) the disparity between these two trends started to get wider in FY97-98. For the last eleven budget years, (i.e., from FY96-97 to FY06-07) SCC's State Aid per FTE ratio decreased -17.6% compared to an increase of 2.0% in the Missouri average from FY96-97 to FY06-07.

**Note:** Missouri state funding to its community colleges is not FTE-based.

	90-91	91-92	92-93	93-94	94-95	95-96	96-97	97-98	98-99	99-00	00-01	01-02	02-03	03-04	04-05	05-06	06-07
SCC	#####	#####	#####	#####	#####	#####	#####	#####	#####	#####	#####	#####	#####	#####	#####	#####	#####
Mo	#####	#####	#####	#####	#####	#####	#####	#####	#####	#####	#####	#####	#####	#####	#####	#####	#####

	90	91	92	93	94	95	96	97	98	99	00	01	02	03	04	05	06
SCC	1,740	2,001	2,403	2,392	2,331	2,343	2,453	2,803	3,028	3,146	3,172	3,609	3,961	4,169	4,318	4,355	4,375
Mo	40,829	43,092	44,513	43,221	41,029	39,691	40,944	41,770	43,253	45,463	45,750	49,033	52,337	54,208	54,130	53,890	54,233

	SCC	Mo. Avg.
90-91	\$1,322	\$1,637
91-92	\$1,241	\$1,492
92-93	\$1,166	\$1,540
93-94	\$1,408	\$1,669
94-95	\$1,544	\$1,895
95-96	\$1,809	\$2,347
96-97	\$2,043	\$2,544
97-98	\$1,896	\$2,784
98-99	\$2,045	\$3,143
99-00	\$2,110	\$3,168
00-01	\$2,175	\$3,316
01-02	\$1,978	\$3,102
02-03	\$1,622	\$2,705
03-04	\$1,565	\$2,480
04-05	\$1,548	\$2,547
05-06	\$1,611	\$2,559
06-07	\$1,683	\$2,559



From CBHE Table 88

From CBHE Table 33