

**Table 4: New Student\* Entry Headcount By Age, And Previous College Experience From Fall 2004 To Fall 2007**

(C8)

No College Experience				
Age	FA04	FA05	FA06	FA07
<=19	1,547	1,437 -7.1%	1,326 -7.7%	1,341 1.1%
20-21	92	69 -25.0%	85 23.2%	92 8.2%
>=22	338	288 -14.8%	216 -25.0%	214 -0.9%
Total	1,977	1,794 -9.3%	1,627 -9.3%	1,647 1.2%

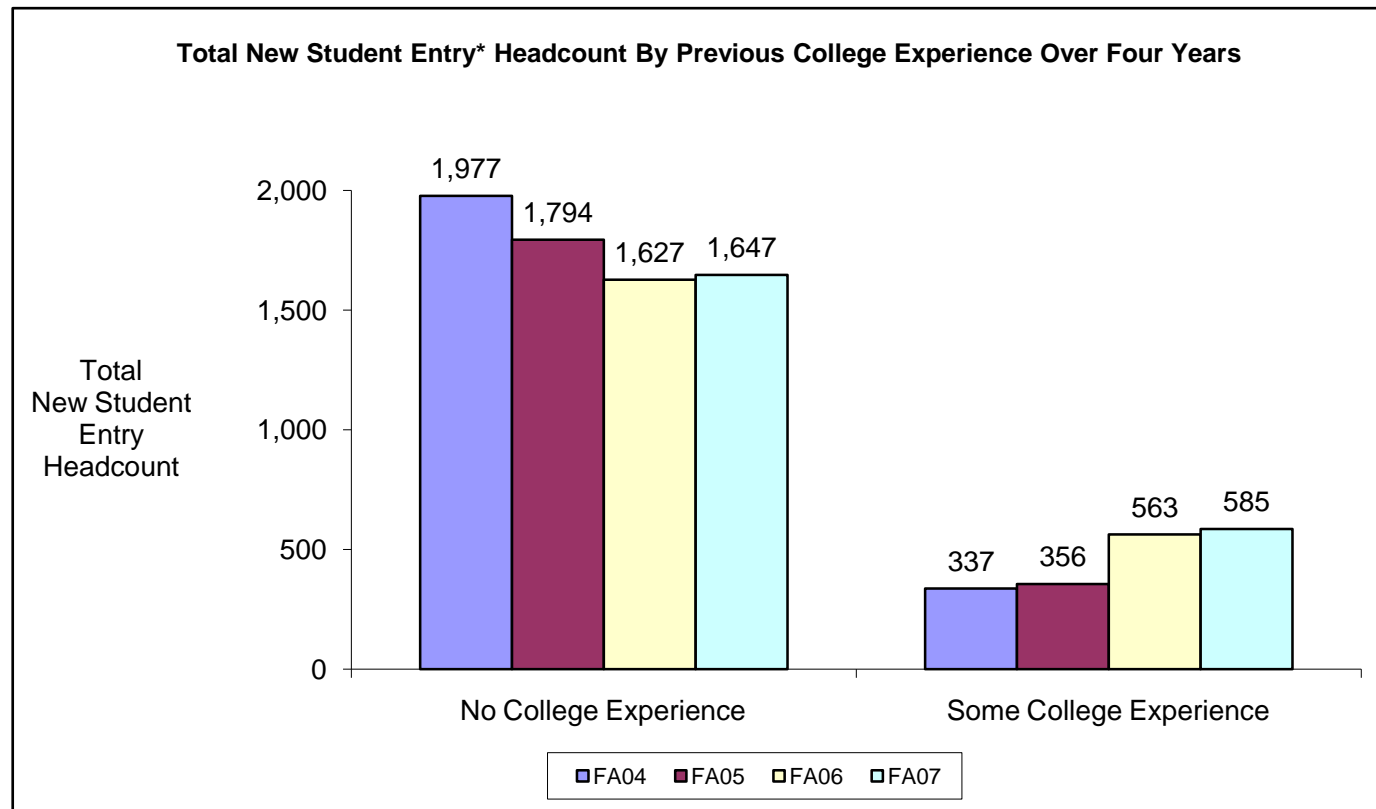
Some College Experience				
Age	FA04	FA05	FA06	FA07
<=19	90	126 40.0%	199 57.9%	229 15.1%
20-21	59	48 -18.6%	87 81.3%	85 -2.3%
>=22	188	182 -3.2%	277 52.2%	271 -2.2%
Total	337	356 5.6%	563 58.1%	585 3.9%

Source: Fall, 2004-2007 STACS data.

Source: Fall, 2004-2007 STACS data.

\* New Student is defined as any student who is attending SCC for the first time in a particular Fall term.

New student entry headcount with no previous college experience exceeded new student entry headcount with some college experience by about 4 times from FA04 to FA07. However, the data in Graph 4 also show that SCC's new student entry headcount with no previous college education declined significantly from FA04 to FA06. It increased 1.2% in FA07. New student entry headcount with some college experience grew significantly in FA06 (58%), but has since moderated back to 4% in FA07.



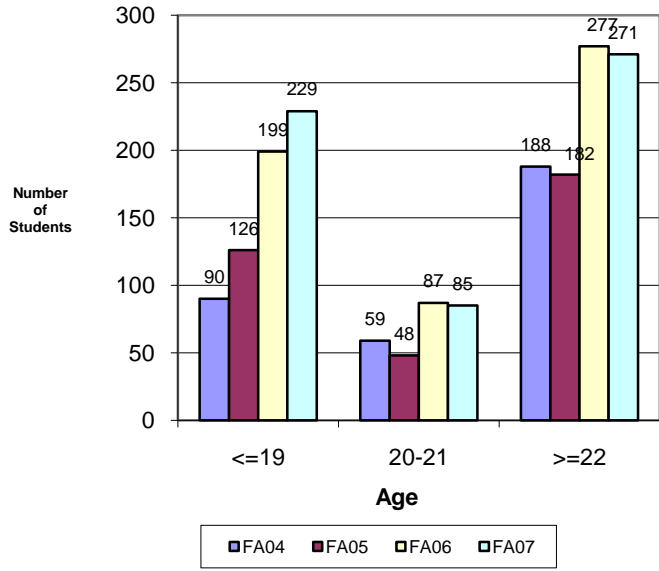
	No College	Some College Experience
FA04	1,977	337
FA05	1,794	356
FA06	1,627	563
FA07	1,647	585

Archive:

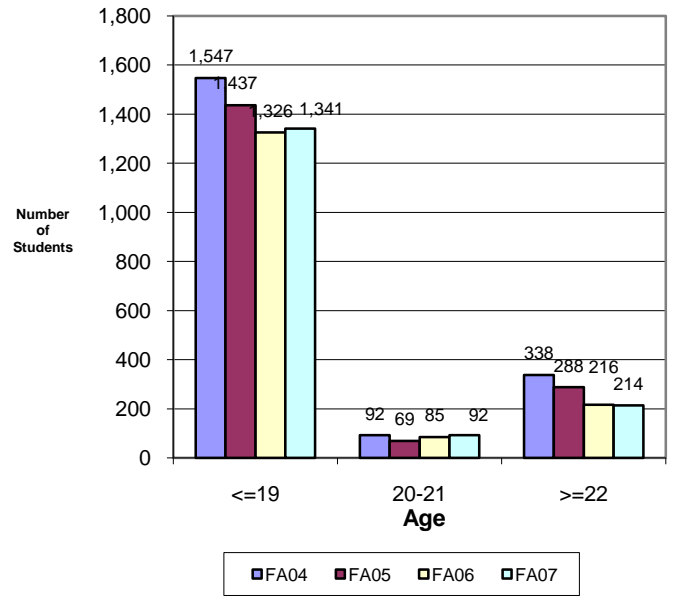
	No College	Some College Experience
FA03	1,860	355



**Graph 4.2: New Students With Some College Experience By Age And Fall Terms**



**Graph 4.1: New Students With No College Experience By Age And Fall Terms**



	No College			
	FA04	FA05	FA06	FA07
<=19	1,547	1,437	1,326	1,341
20-21	92	69	85	92
>=22	338	288	216	214

	Some College			
	FA04	FA05	FA06	FA07
<=19	90	126	199	229
20-21	59	48	87	85
>=22	188	182	277	271

Archive:	No College	Some College
	FA03	FA03
<=19	1,411	68
20-21	100	54
>=22	349	233